

studio massimo iarussi progettazione della luce

Illuminare il Patrimonio

La luce negli spazi storici, fra conservazione e innovazione

APIL Light talk 2024 | Verona, 12 dicembre 2024

Su di me:

- **Sono architetto**
- **Svolgo l'attività di progettazione della luce da alcuni decenni**
- **Vivo e lavoro a Firenze**
- **Mi occupo principalmente di illuminazione di musei e edifici storici**

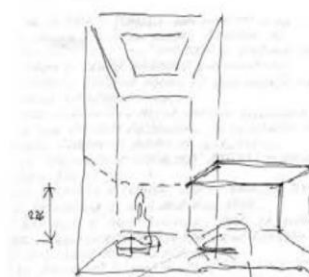
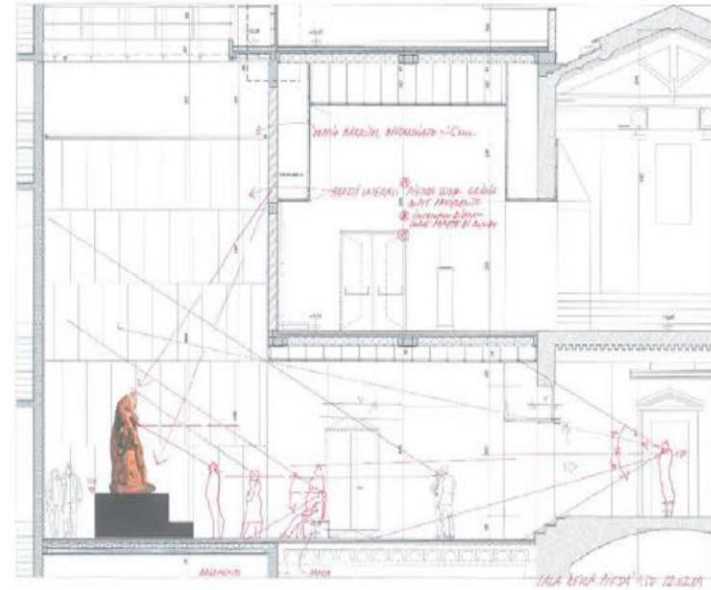
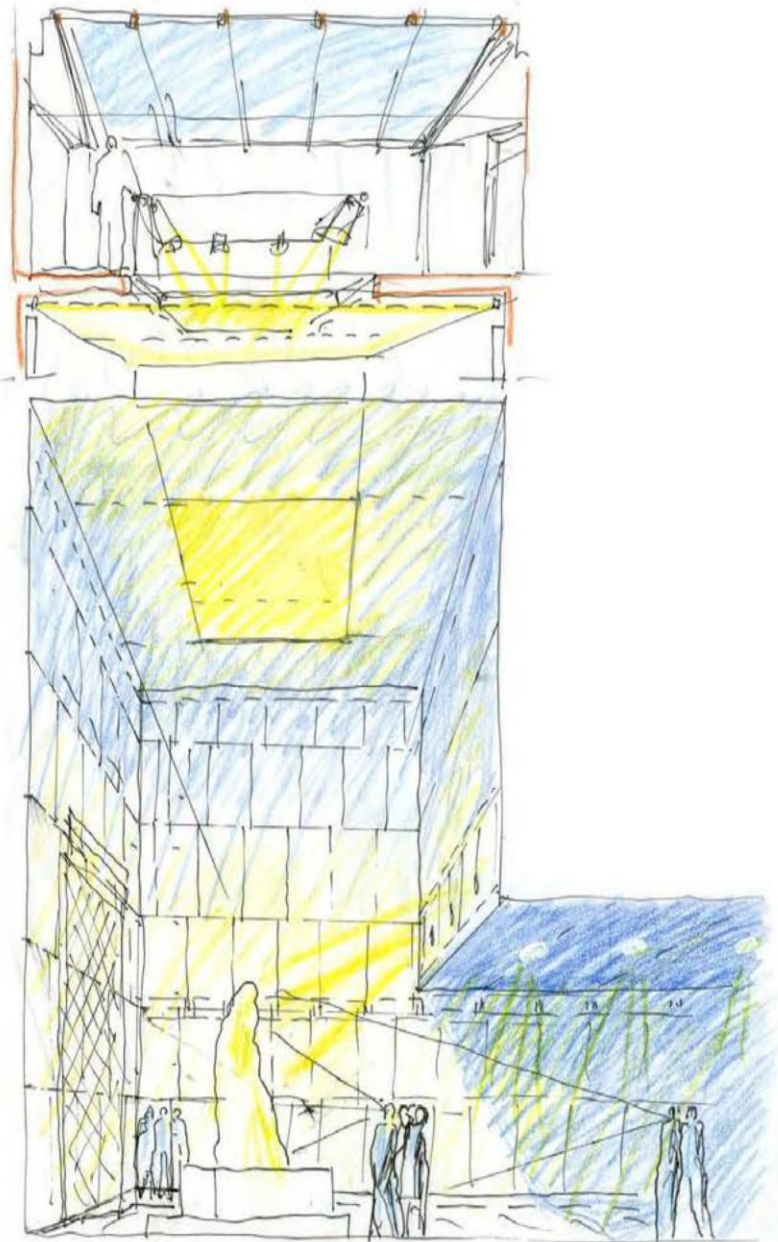
Il mio approccio al progetto:

- Lavoro di gruppo
- Rispetto dei ruoli
- La luce non deve mai *imporsi*
- Una buona illuminazione deve *scompare*
- La luce deve *creare emozioni* ?

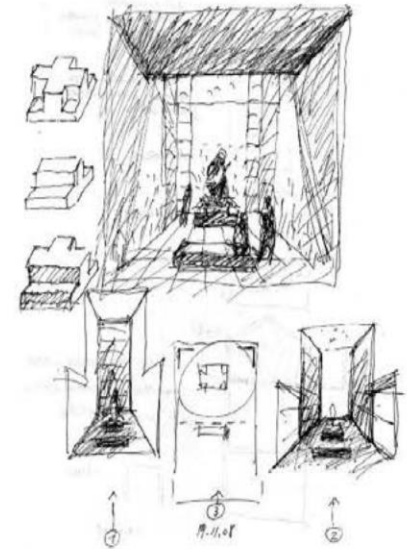
Non sono, piuttosto, l'architettura e le opere d'arte illuminate che devono creare emozioni ?

Museo dell'Opera del Duomo di Firenze





"NE' SINGOLI NE' L'INTELL. HO' PIU' CHE POTER
L'ANIMA, VOLTA A POCO' ANCHE' BRUNA
L'ANIMA, A TRACUNA ANI, 'N' UOCCO LE' MENTE"
/ MICHELANGELO 1574



Museo dell'Opera del Duomo di Firenze



Museo dell'Opera del Duomo di Firenze



Museo Archeologico Regionale della Valle d'Aosta, Aosta



Museo Archeologico Regionale della Valle d'Aosta, Aosta



Museo Archeologico Regionale della Valle d'Aosta, Aosta



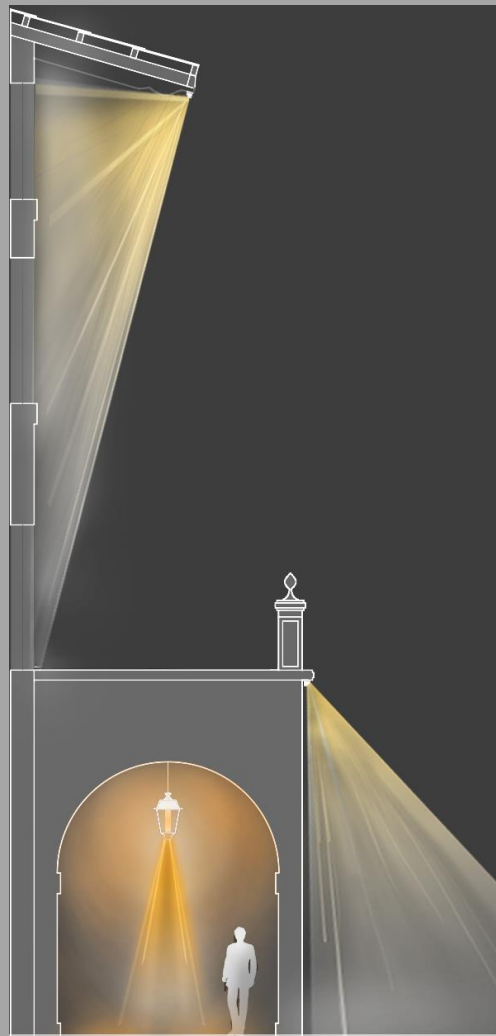
Piazza Marsilio Ficino, Figline Valdarno (FI)



Piazza Marsilio Ficino, Figline Valdarno (FI)



Piazza Marsilio Ficino, Figline Valdarno (FI)



Piazza Marsilio Ficino, Figline Valdarno (FI)



Piazza Marsilio Ficino, Figline Valdarno (FI)



Piazza Marsilio Ficino, Figline Valdarno (FI)

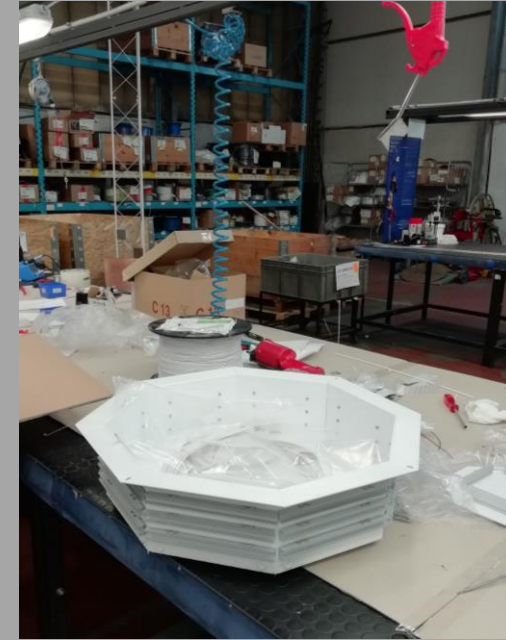
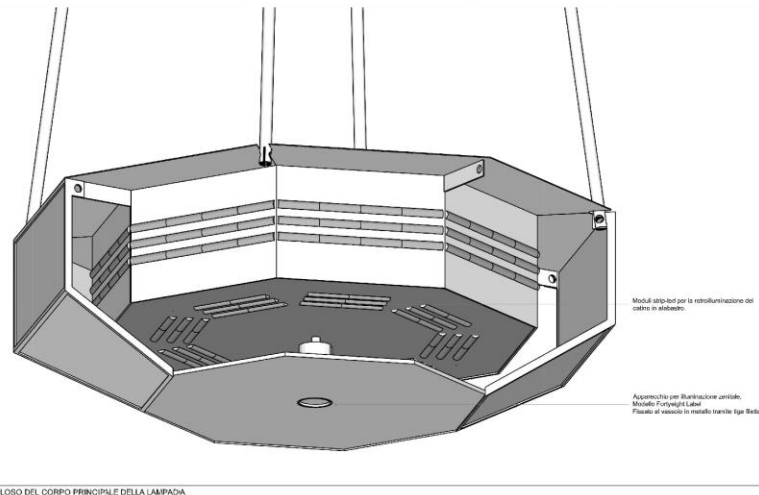
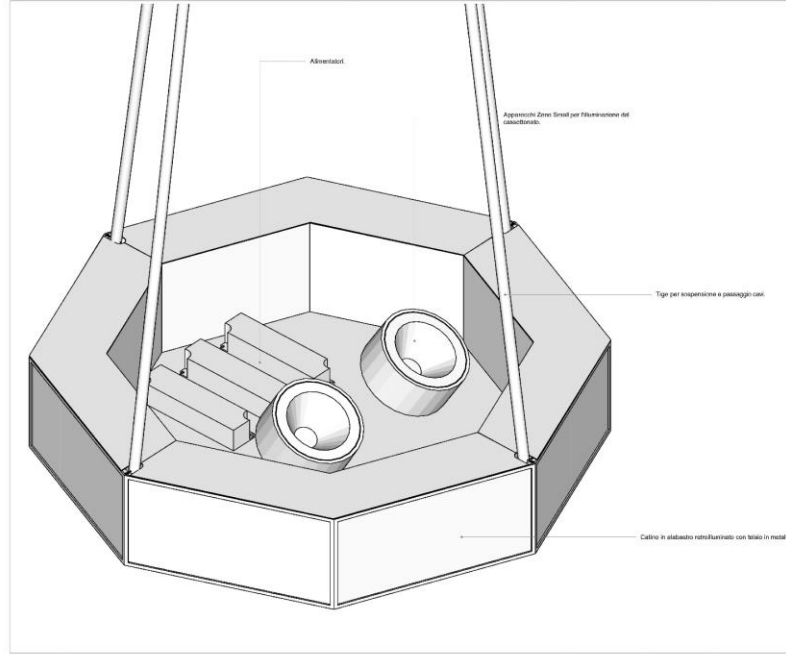
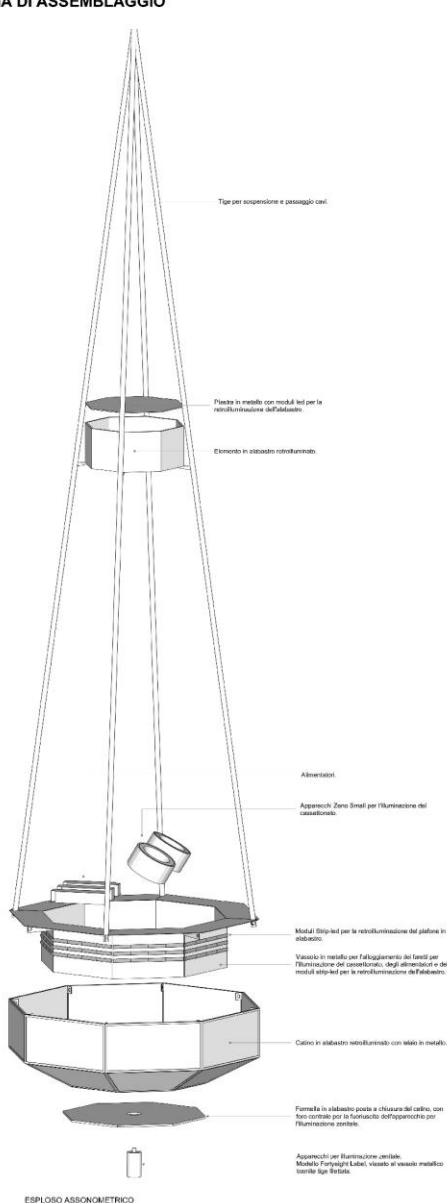


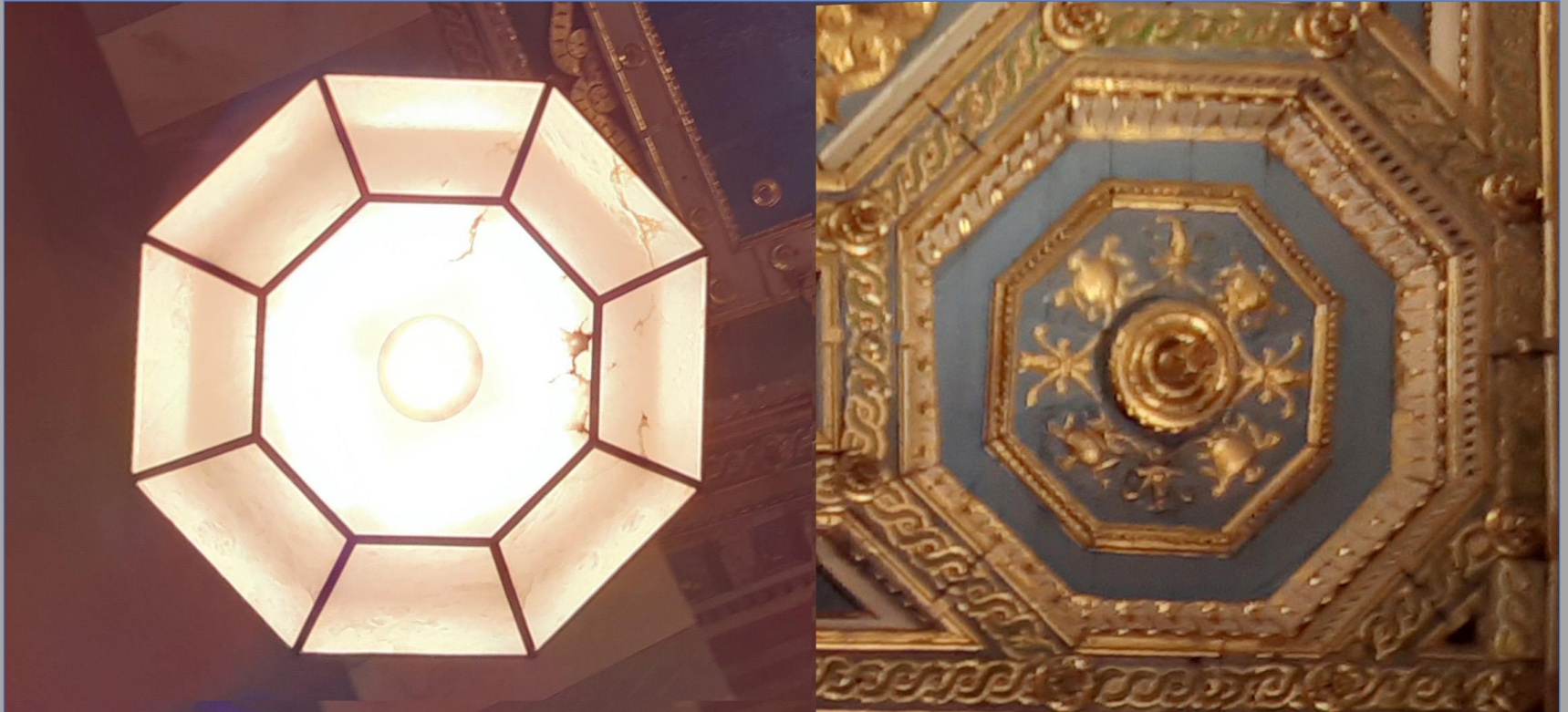
Piazza Marsilio Ficino, Figline Valdarno (FI)



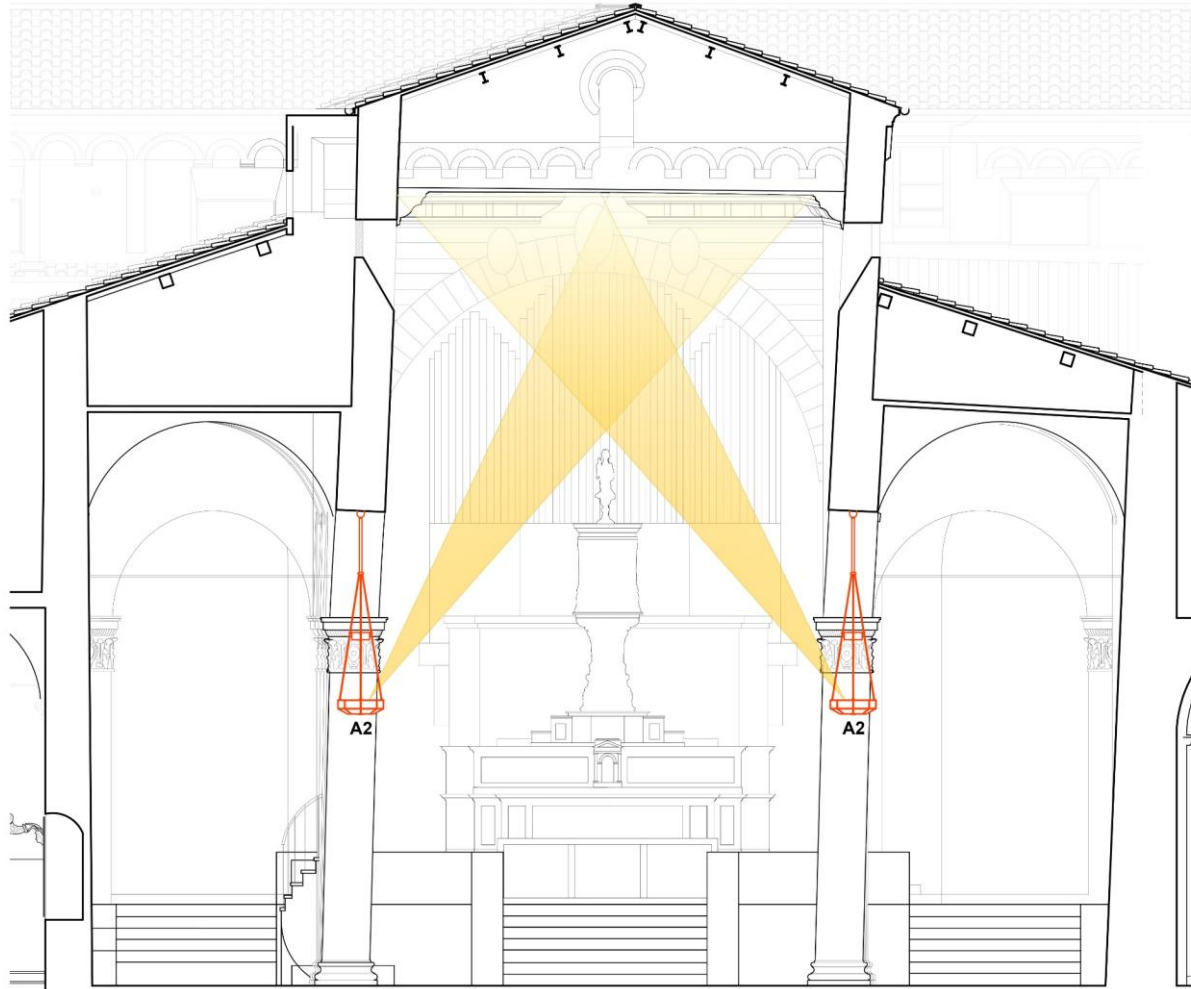


SOSPENSIONE IN ESECUZIONE SPECIALE PER LUCE DIRETTA E DIFFUSA SCHEMA DI ASSEMBLAGGIO









APPARECCHI **A2**: illuminazione del cassettonato - Sezione trasversale B-B









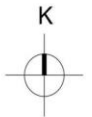
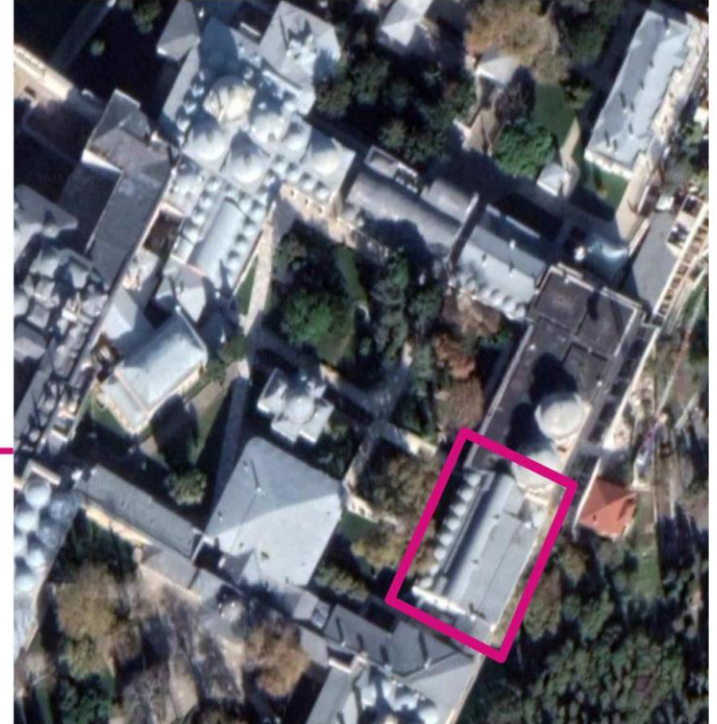






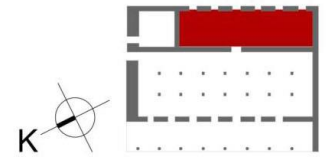
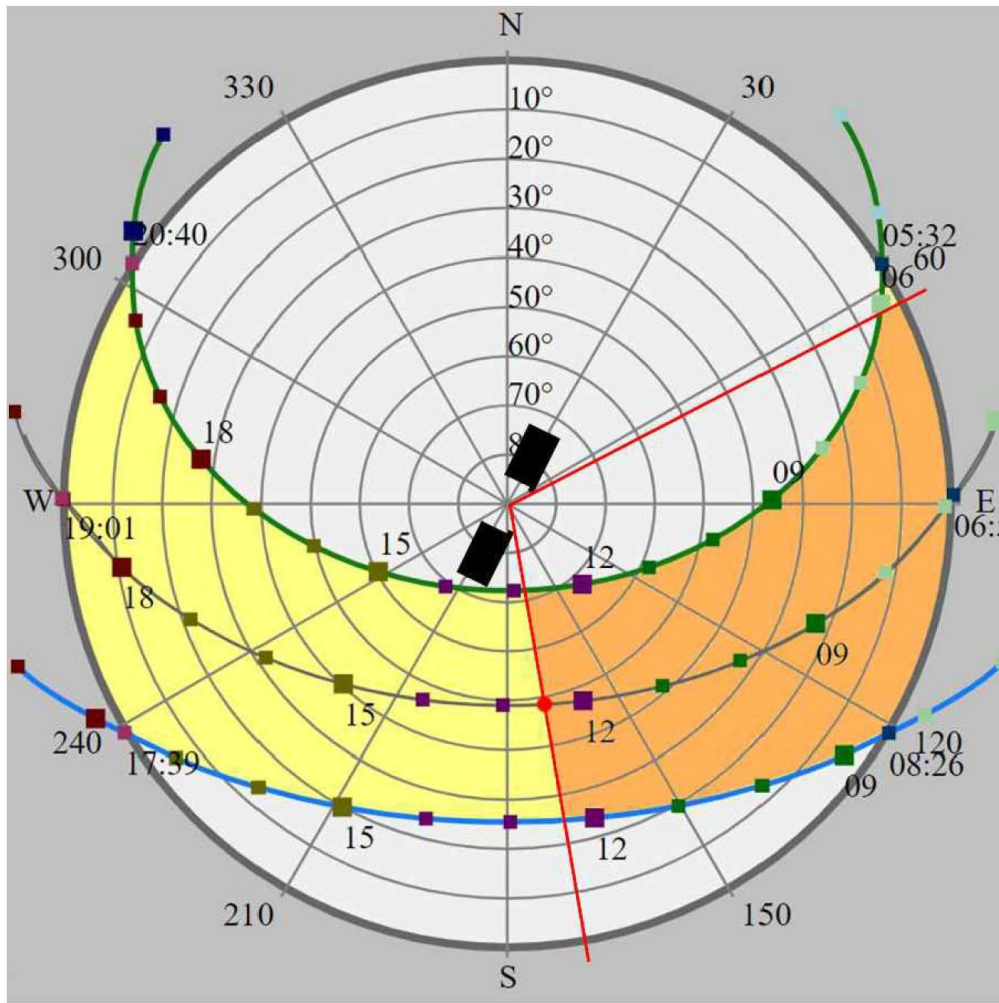
Museo dei Kaftani, Complesso del Topkapi, Istanbul

Location

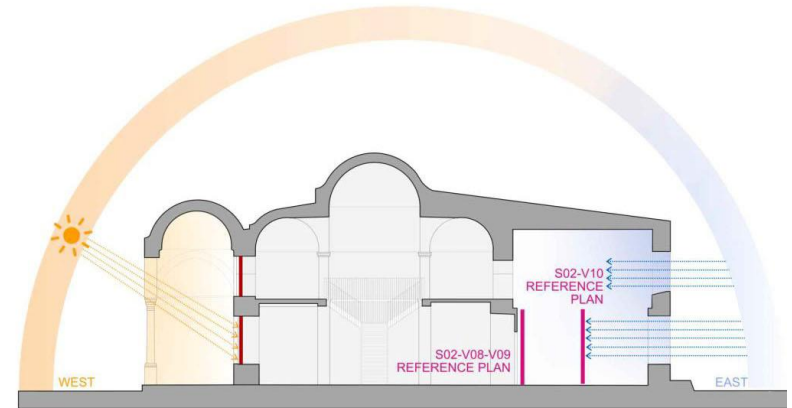


0 m 50 m 100 m 150 m 200 m

Museo dei Kaftani, Complesso del Topkapi, Istanbul

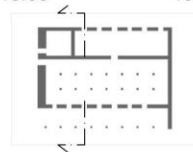
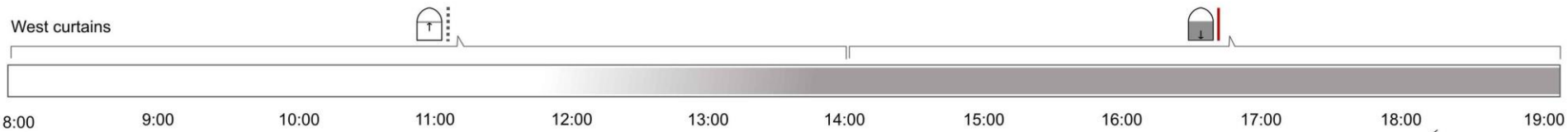
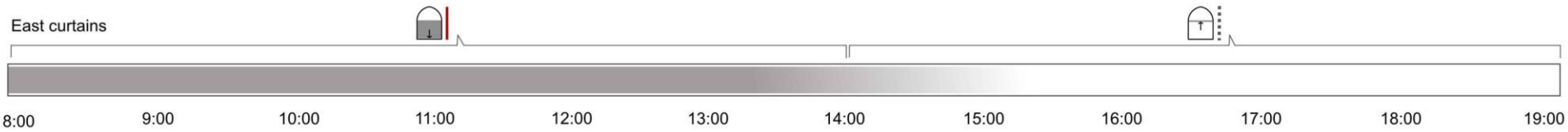
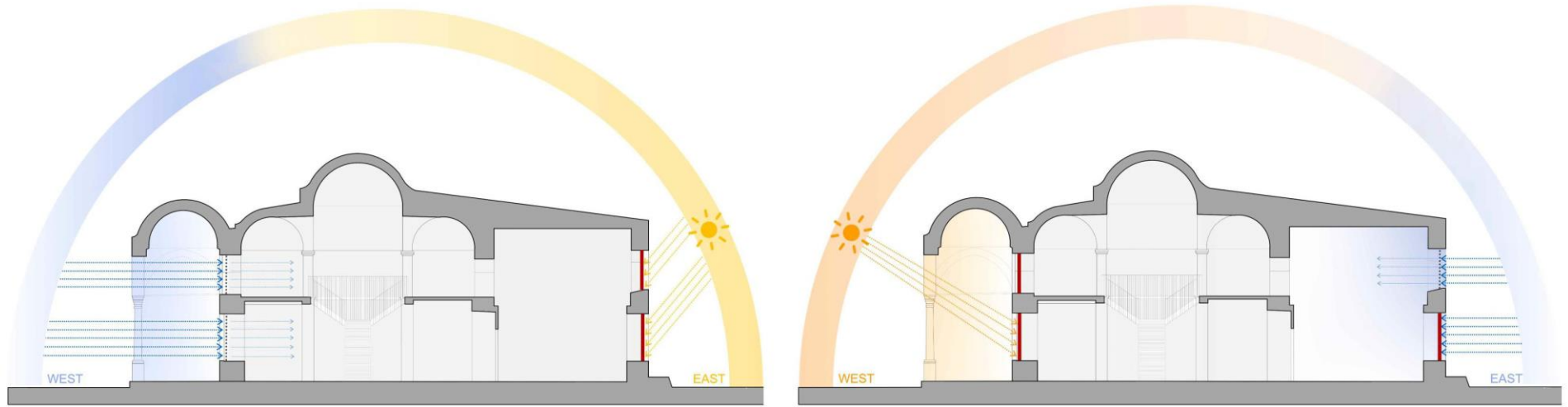


Reference plan of calculation



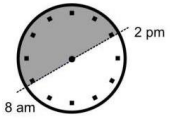
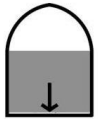
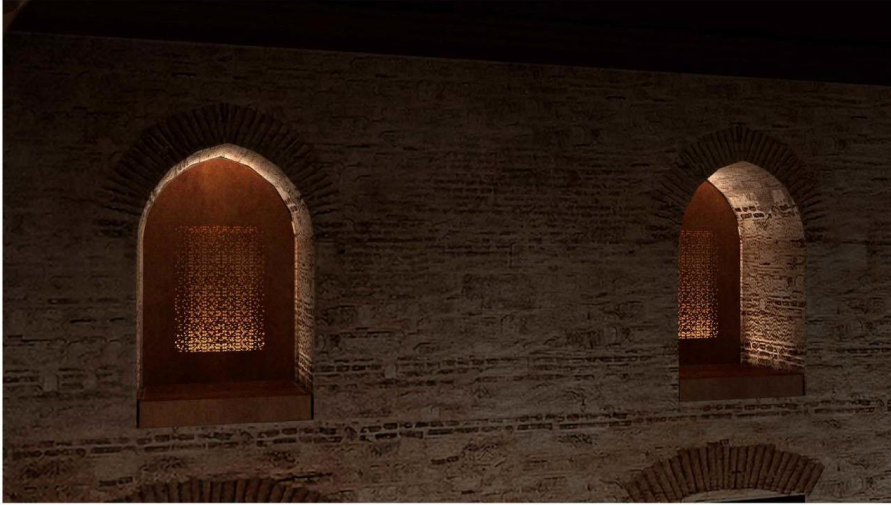
The table shows the illuminance values generated by the daylight on the most critical surfaces facing the windows of the Est wall, in room S02. The values have been calculated at various times and dates and refer to a clean sky lighting condition; time intervals subjects to direct sunlight contribution according to the solar diagram have been discarded, since the obscuring curtains will intervene.
 The maximum illuminance level (marked in red) has been considered as the base value to evaluate the filtering needed.

Museo dei Kaftani, Complesso del Topkapi, Istanbul

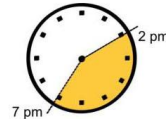
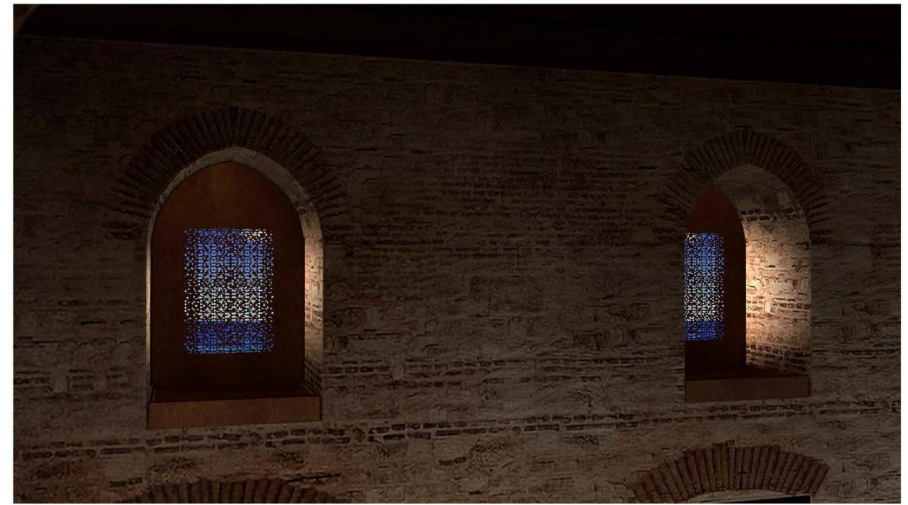
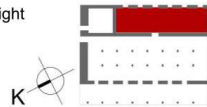


Museo dei Kaftani, Complesso del Topkapi, Istanbul

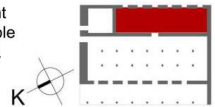
EAST SIDE



During the morning when there is the direct sun light the curtain are closed; and the backlit panel and the wall grazing lights are turned on.



During the afternoon when there is no direct sun light the curtains are opened. The view of Bosforo is visible while the naural light is filtered at the minimum level.



Museo dei Kaftani, Complesso del Topkapi, Istanbul

TOPKAPI SARAYI MÜZESİ - SEFERLİ KOĞUŞU - ELBİSE-İ HÜMAYUN - TEŞHİR TANZİM PROJESİ
 TOPKAPI PALACE MUSEUM - DORMITORY OF SEFERLI - IMPERIAL COSTUMES - EXHIBITION DESIGN

massimo iarusi lighting design

AYDINLATMA PROJESİ
 LIGHTING PROJECT

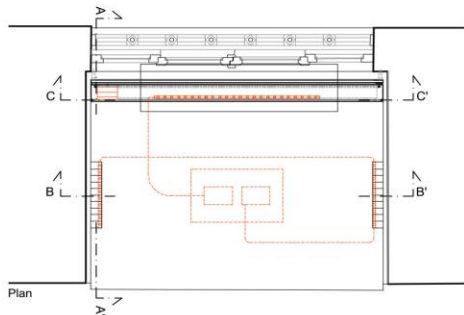
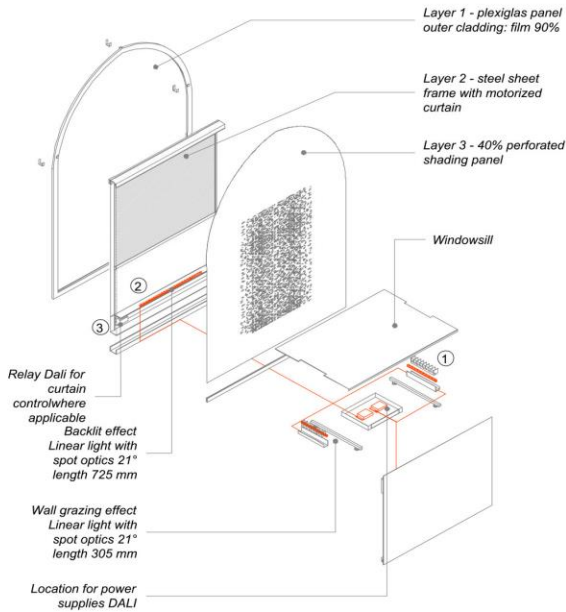
MART 2021
 MARCH 2021

AYD 1.6 PENCERE PANOSU - TIPWINDOW
 SCREEN - TYPE PP2- LIGHT DETAILS

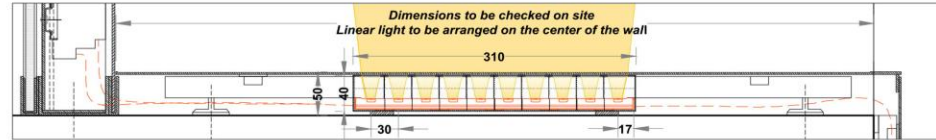
PP2

İMALATTAN ÖNCE TÜM ÖLÇÜLER YERİNDE ALINMALI VE KONTROL EDİLMELİDİR
 ALL DIMENSIONS TO BE CHECKED ON SITE AND VERIFIED BEFORE FABRICATION
 SEE ARCHITECTURAL DRAWINGS FOR EXHIBITION SPECS

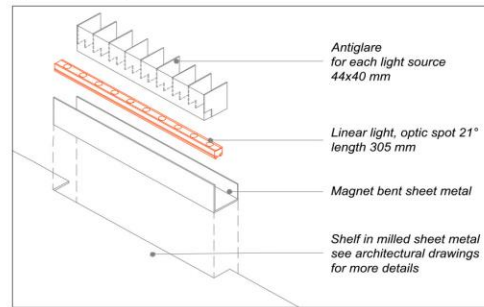
Constructive exploded



① A Kesiti - Section A - Wall grazing illumination



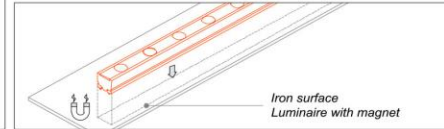
① Constructive exploded: detail 1



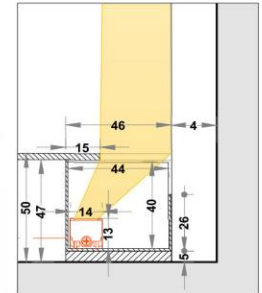
Linear light - see technical specification



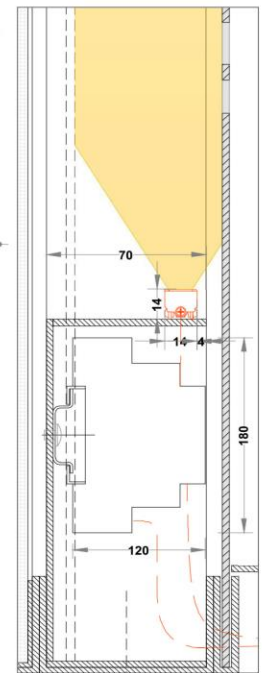
Technical reference



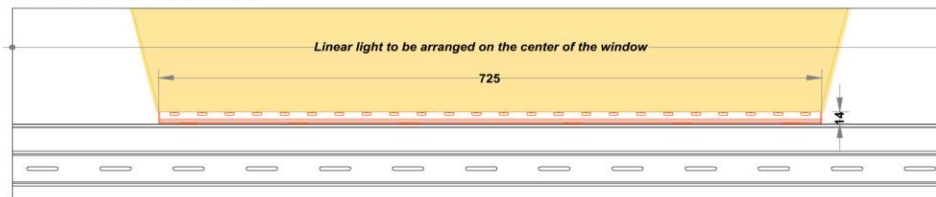
B Kesiti - Section B



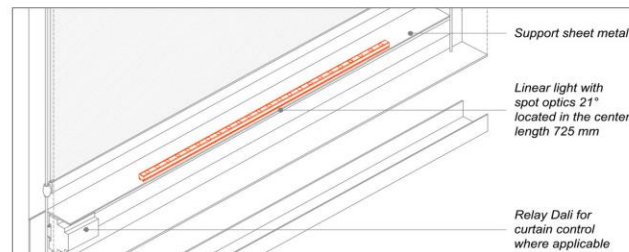
A Kesiti - Section A



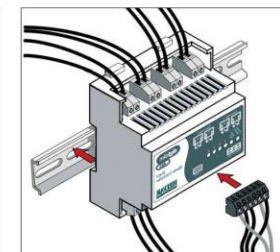
② C Kesiti - Section C - Backlit illumination



② Constructive exploded: detail 2



③ Relay Dali for curtain control



Scale 1:5 - 1:2

For further details on light fixtures please refer to technical specifications Dimensions expressed in mm


Museo dei Kaftani, Complesso del Topkapi, Istanbul



Museo dei Kaftani, Complesso del Topkapi, Istanbul



studio massimo iarussi progettazione della luce



Grazie per l'attenzione !